



**DIMSAY**

**Heavy Equipment Field Management Software**

“

**What is DIMSAY?**  
**Program and Software**  
**Features**

”





**DIMSAY** is a software which has been developed for managing and monitoring operations of construction sites on web-based and mobile applications.

**DIMSAY** provides you with insight into the future while managing the operation processes accurately and quickly, and making historical analyzes by storing the data from the field.

### Scope

- ☐ Equipment Working Hours
- ☐ Downtime
- ☐ Part Changes
- ☐ GPS Location Data
- ☐ Changed Parts
- ☐ Intervention Staff
- ☐ Fuel Consumption Data

### Units

- ☐ Operators
- ☐ Technical Support Team
- ☐ Central Operation
- ☐ Purchasing
- ☐ Warehouse & Stock



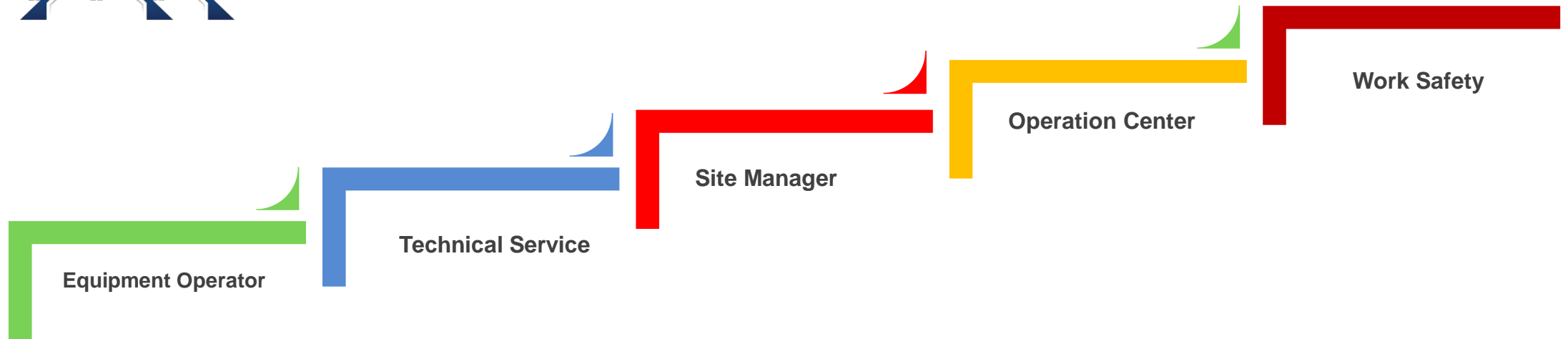
# What is DIMSAY ?

DIMSAY (Heavy Equipment Field Management Software) is a software that organizes the operational management of the heavy equipment located on construction sites.

## Under the Same Roof



Managing the heavy equipment in different locations from the Company Operation Center and turning all processes into a traceable and analyzable structure.



## Inter-unit Communication



DIMSAY is a backbone at your company that gathers heavy equipment operator, work safety specialists, site managers, technical support team, purchasing and company operation center under the same roof and ensures that the entire unit is aware of the processes.

# Program Features

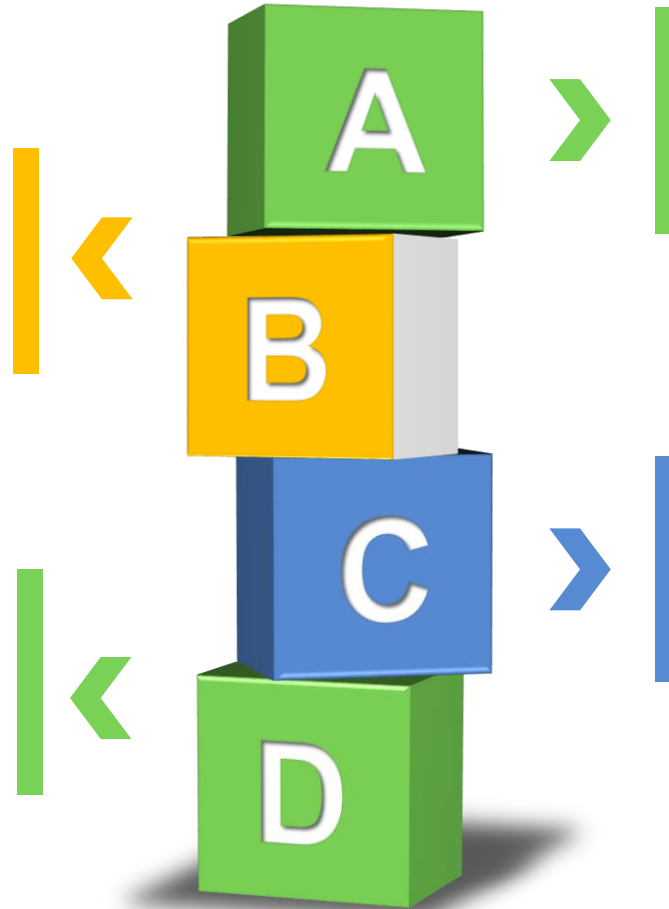
## Manage Your Field Operation Perfectly

### Mobile Applications

Your driver and technical team at the construction sites can communicate instantly via the mobile application. Malfunctions, breakdowns that may occur in equipment reach the operation center as notifications instantly by the plug-ins in the form of Photos, Text, File attachments via mobile applications.

### Online 7/24 Accessible

Monitor your operations 24/7 without interruption. Track your processes instantly via mobile applications and web-based screens. You can access all your data through our servers. Track your construction sites in different locations on one screen.



### Instant Notifications

You can receive notifications instantly in all processes. Failure notifications, instant notifications are provided by the technical service for the work ends or in all problems that may occur during the process or for the department changes that will occur in the work orders. You can define notifications as e-mail, text or in-app notification, and get instant information from the whole process.

### Reporting Screens

You can get instant location information via GPS tracking system. Analyze many data such as fuel consumption, working hours, pressure, etc. for equipment compatible with the Canbus module.

# SOFTWARE Features

## Malfunction Pool



Manage failure requests from different sites on one screen. The malfunctions to be reported by the operators will come to the operation center as a notification instantly. Resolve failure management quickly and efficiently with completed and waiting categories in the malfunction pool.

## Maintenance Times



Check all maintenance times of the equipments. Track the machines which maintenance times are overdue or the maintenance times are coming on a single screen in your operation processes where hours based work is recorded. Get notified instantly with mail notifications.



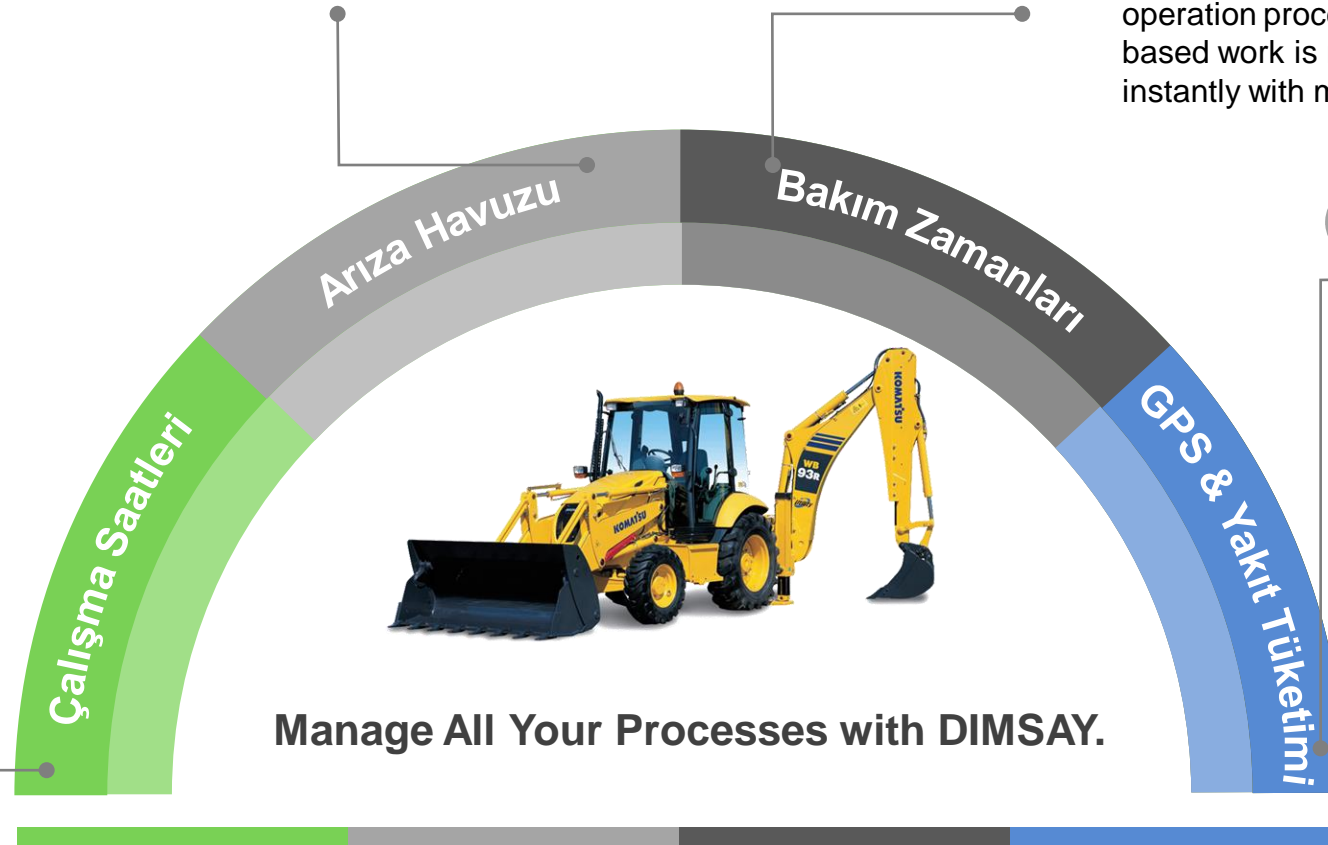
## Heavy Equipment Working Hours

Do you wonder how long your equipments work daily? DIMSAY collects this information from the field through GPS products and mobile applications. Report how many hours each machine is operating during the day.



## GPS ve Yakıt Tüketimi

Thanks to the GPS tracking device to be installed on the machines and the Canbus module to be used in compatible models, the total fuel consumption, hourly fuel consumption, hydraulic pressures, working times etc. You can access many data .





# CHECK THE EQUIPMENT WORKING HOURS

---

DIMSAY Tracks the working hours of the equipments on your behalf with GPS Tracking Devices, modular communication ports and definitions coming from machine operators.

This information comes to the database, is analyzed by cross-examination and priority, and reports the heavy equipment which maintenance time has come and which has passed.

DIMSAY alerts the operation unit by displaying the overdue equipment with different colors and warning information on the system and helps managing the processes within the maintenance plan of the equipments.



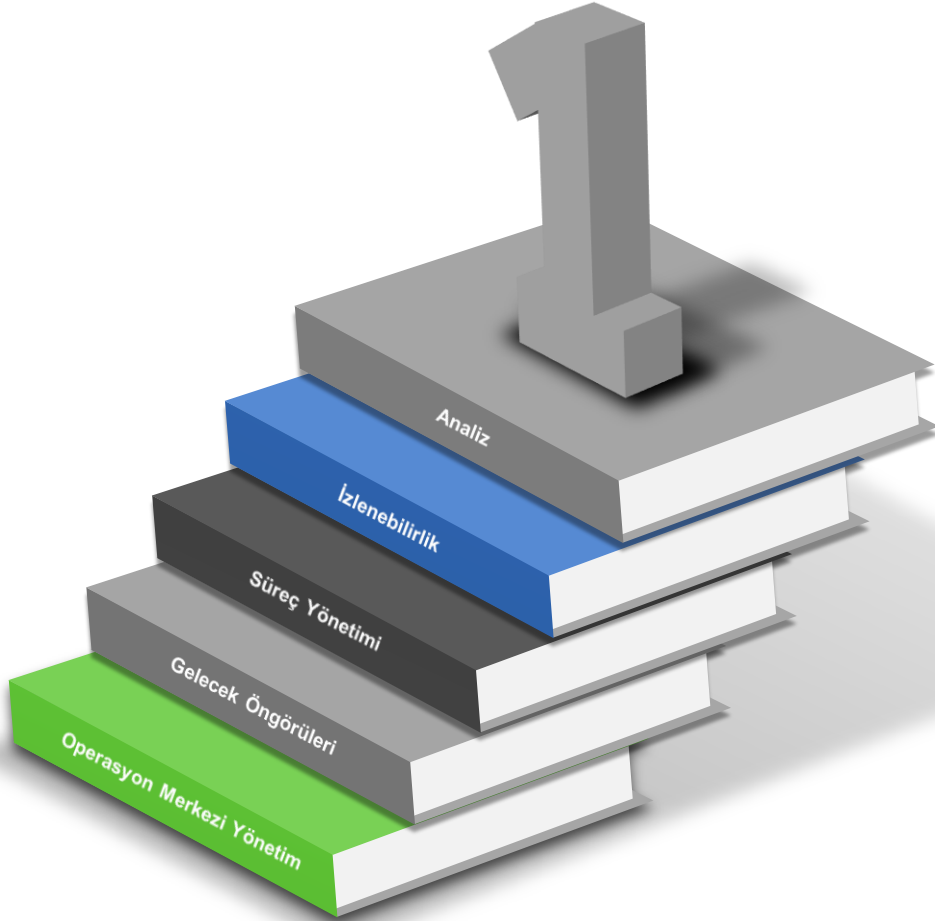
“

**Productivity**

”



# DATA MINING



## Process Management

With DIMSAY, you can not only manage your operations and equipments but it also creates a data pool for data mining. Today, monitoring and processing of data allows you to use process and interaction contacts in business much more efficiently and effectively.

## Future Predictions

Data mining enables organizations to plan the future and make business processes much more efficient and predictable. The efficiency control can be returned to the company as time and quality.

## Central Operation Management

DIMSAY allows you to manage your field operations from a single place. Data comes from the operators, site chiefs, technical units and purchasing processes can be monitored from a single point.

# ADVANTAGES

Thanks to instant notifications and traceability of faults, failure notifications in field management are quickly transmitted to company departments. With the coordinated work of the teams for the failure management of the machine in the field in the shortest time, more efficient work of the heavy equipment is provided.

DIMSAY can organize the malfunction management of the machines in the field and provide traceability throughout the operation. The operator reporting the intervention between the fault start time and the fault end time, the intervening Technical Team, the unit managing the operation and all the processes passed are analyzed.

DIMSAY allows you to analyze for the future with the data collected from the field. Part change frequency, the operator that gives the most malfunction among the operators, the breakdown management times of the technical service, which machine fails during the process, are collected from the field.

Parts changes in construction machines and how long the parts remain on the machine. You can perform stock management with part change intensities. The productivity of heavy equipment increases with the availability of frequently used parts at the stations or the supply of parts that are close to completing efficiency in a short time.

All units can see the time flow of the operation during the operation process. With the creation of a fault record, all units are included in the process with the notifications ( e-mail, text, Notification). The process continues with the same dynamics at each station change.

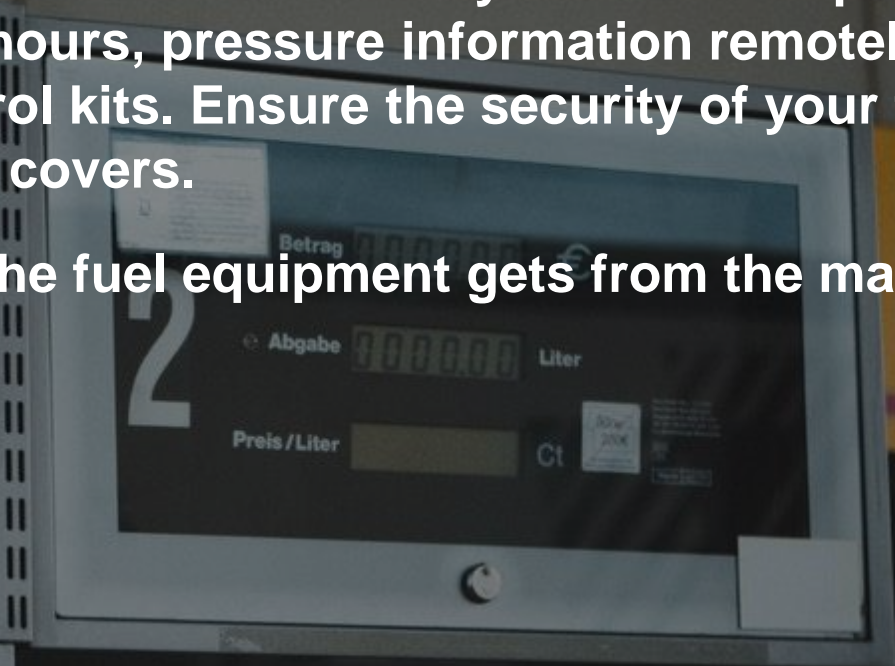




# MONITOR YOUR FUEL CONSUMPTION

Monitor your vehicles' hourly fuel consumption, working hours, pressure information remotely with fuel control kits. Ensure the security of your fuel tanks with tank covers.

Monitor the fuel equipment gets from the main tank.



“

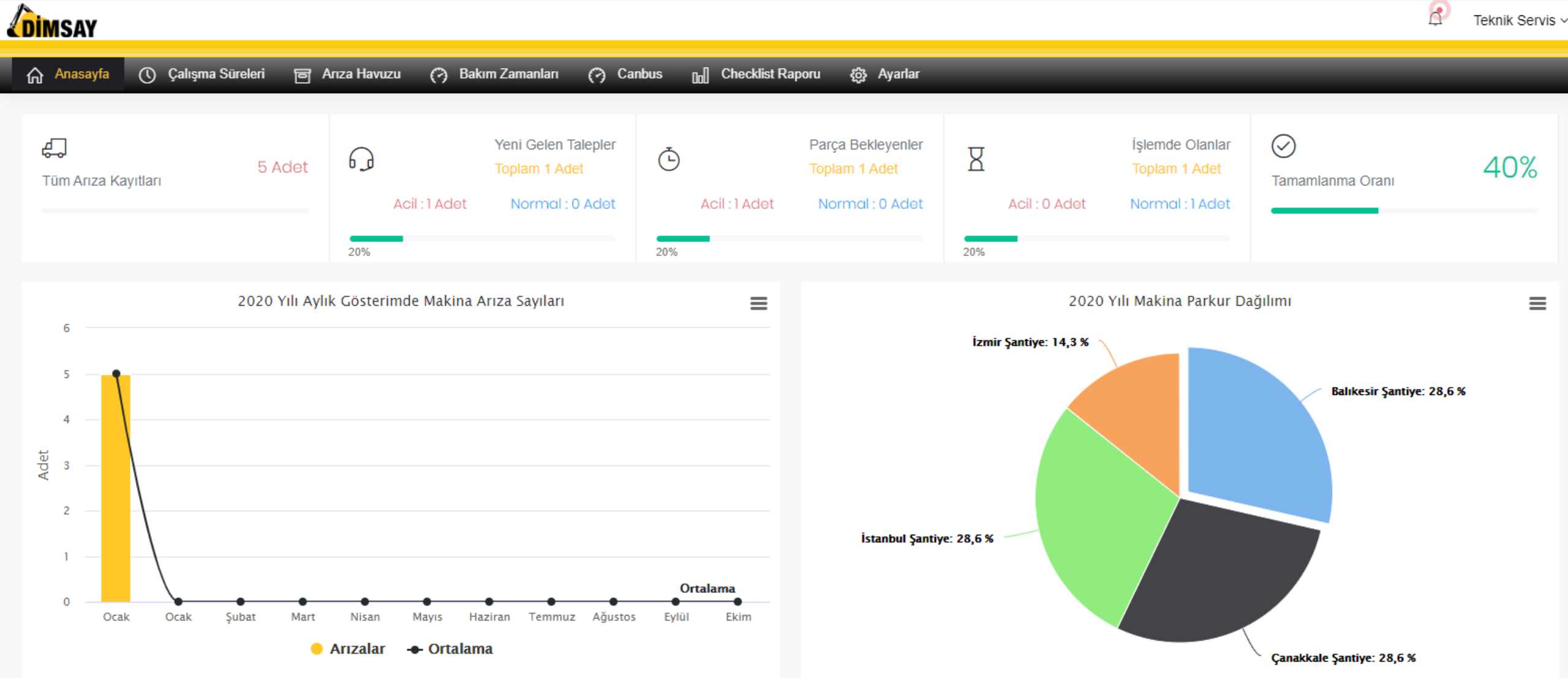
**Screenshots**

”



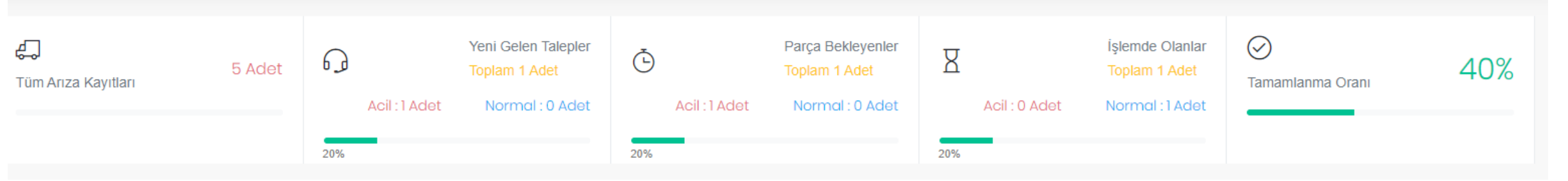
# Operation Screen

Track malfunction processes on a single screen. View new incoming requests, pending requests on the site basis. Monitor your processes with clear graphics.



# Failure & Worksite Rates

Check for all malfunctions and notifications in pending malfunctions, emergencies, normal status.



Check equipment distribution by worksite

Şantiyelere Göre Makina Dağılımı

Şantiye	Makina Sayısı	Teknik Sorumlu	-
Balıkesir Şantiye	2 Adet	Atilla Kurt	🔧
Çanakkale Şantiye	2 Adet	Cengiz Yıldızatlı	🔧
İstanbul Şantiye	2 Adet	Mehmet Cantekin	🔧
İzmir Şantiye	1 Adet	Şehmuz boztepe	🔧
Toplam	7 Adet Makina		

4 kayıttan 1 - 4 arasındaki kayıtlar gösteriliyor



# Equipment Operation & Downtime

You can follow up the working times of all equipments. You can monitor the information such as assignment status of the work request, machine code, total running time, total downtime.



Teknik Servis

Anasayfa Çalışma Süreleri Arıza Havuzu Bakım Zamanları Canbus Checklist Raporu Ayarlar

Makina Tanımı Tümü

Dimsay Kodu - Marka Tümü

Şantiye Tümü

05.01.2020 - 10.01.2020

Detaylı Arama Yapınız

Filtre Sıfırla

Arızada Olan Makinalar

Aktif Olan Makinalar

Boşta Olan Makinalar

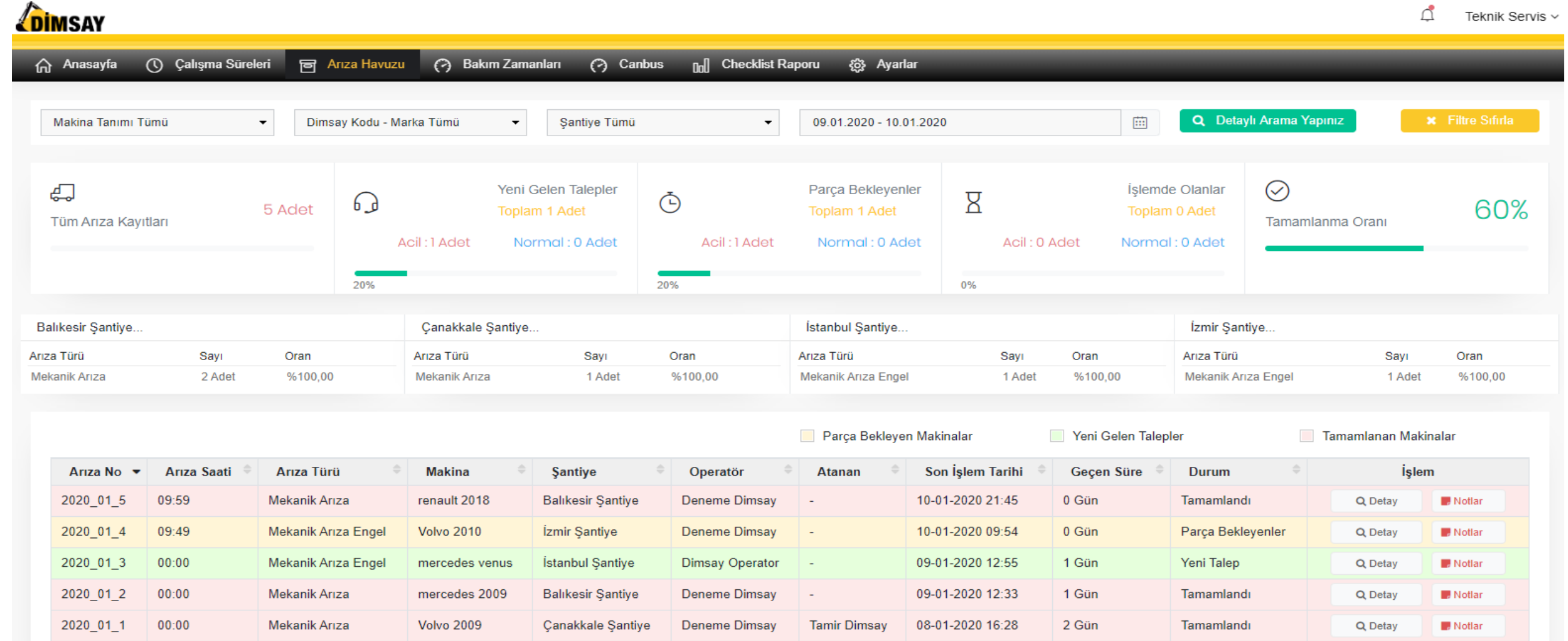
Dimsay Kodu	Makina	Operatör	Toplam Çalışma Süresi	Toplam Arıza Süresi	İşlemler
	10001 2018	İş Talebi Atanmadı	0 saat 1 dakika 18 saniye	0 saat 0 dakika 0 saniye	Geçmiş Çalışmalar
1001	renault 2018	İş Talebi Atanmadı	0 saat 0 dakika 0 saniye	11 saat 42 dakika 45 saniye	Arıza Detay Geçmiş Çalışmalar
1002	Volvo 2010	İş Talebi Atanmadı	0 saat 0 dakika 0 saniye	11 saat 53 dakika 20 saniye	Arıza Detay Geçmiş Çalışmalar
1003	mercedes venus	İş Talebi Atanmadı	0 saat 0 dakika 10 saniye	32 saat 47 dakika 2 saniye	Arıza Detay Geçmiş Çalışmalar
1005	Volvo 2009	İş Talebi Atanmadı	0 saat 0 dakika 44 saniye	0 saat 5 dakika 27 saniye	Geçmiş Çalışmalar
1007	mercedes 2009	İş Talebi Atanmadı	0 saat 0 dakika 31 saniye	2 saat 37 dakika 39 saniye	Geçmiş Çalışmalar
1007	Volvo 2009	İş Talebi Atanmadı	0 saat 0 dakika 37 saniye	0 saat 0 dakika 0 saniye	Geçmiş Çalışmalar

7 kayıttan 1 - 7 arasındaki kayıtlar gösteriliyor

Önceki 1 Sonraki

# Malfunction Pool

It is the screen where the malfunctions of the equipments are monitored. Process is controlled through categories such as failure time, failure type, construction site, parts waiting and operations.





# Maintenance Times

Plan maintenance times of equipments on your worksite. Track maintenance time remaining or overdue.



Teknik Servis ▾

[Anasayfa](#) [Çalışma Süreleri](#) [Arıza Havuzu](#) **[Bakım Zamanları](#)** [Canbus](#) [Checklist Raporu](#) [Ayarlar](#)

Makina Tanımı Tümü ▾

Şantiye Tümü ▾

Tüm Bakım Türü ▾

Bakım Süresi Tümü ▾

[Q Detaylı Arama Yapınız](#)

[X Filtre Sıfırla](#)

☐ Bakım Zamanı Yaklaşan Makinalar

☐ Bakım Zamanı Gelmemiş Makinalar

☐ Bakım Zamanı Geçmiş Makinalar

Dimsay Kodu	Şantiye	Güncel	250 SAAT BAKIMI			500 SAAT BAKIMI			1000 SAAT BAKIMI		
			Bakım	Kalan	İşlem	Bakım	Kalan	İşlem	Bakım	Kalan	İşlem
1007	Balıkesir Şantiye	1001 Saat	-	-	-	-	-	-	1000 Saat	1 Saat	<a href="#">Q Detay</a>
1007	Çanakkale Şantiye	1000 Saat	-	-	-	-	-	-	-	-	-
1005	Çanakkale Şantiye	1000 Saat	-	-	-	-	-	-	-	-	-
	İstanbul Şantiye	1000 Saat	-	-	-	-	-	-	-	-	-
1003	İstanbul Şantiye	1000 Saat	-	-	-	-	-	-	-	-	-
1002	İzmir Şantiye	300 Saat	-	-	-	-	-	-	-	-	-
1001	Balıkesir Şantiye	190 Saat	-	-	-	-	-	-	-	-	-

7 kayıttan 1 - 7 arasındaki kayıtlar gösteriliyor

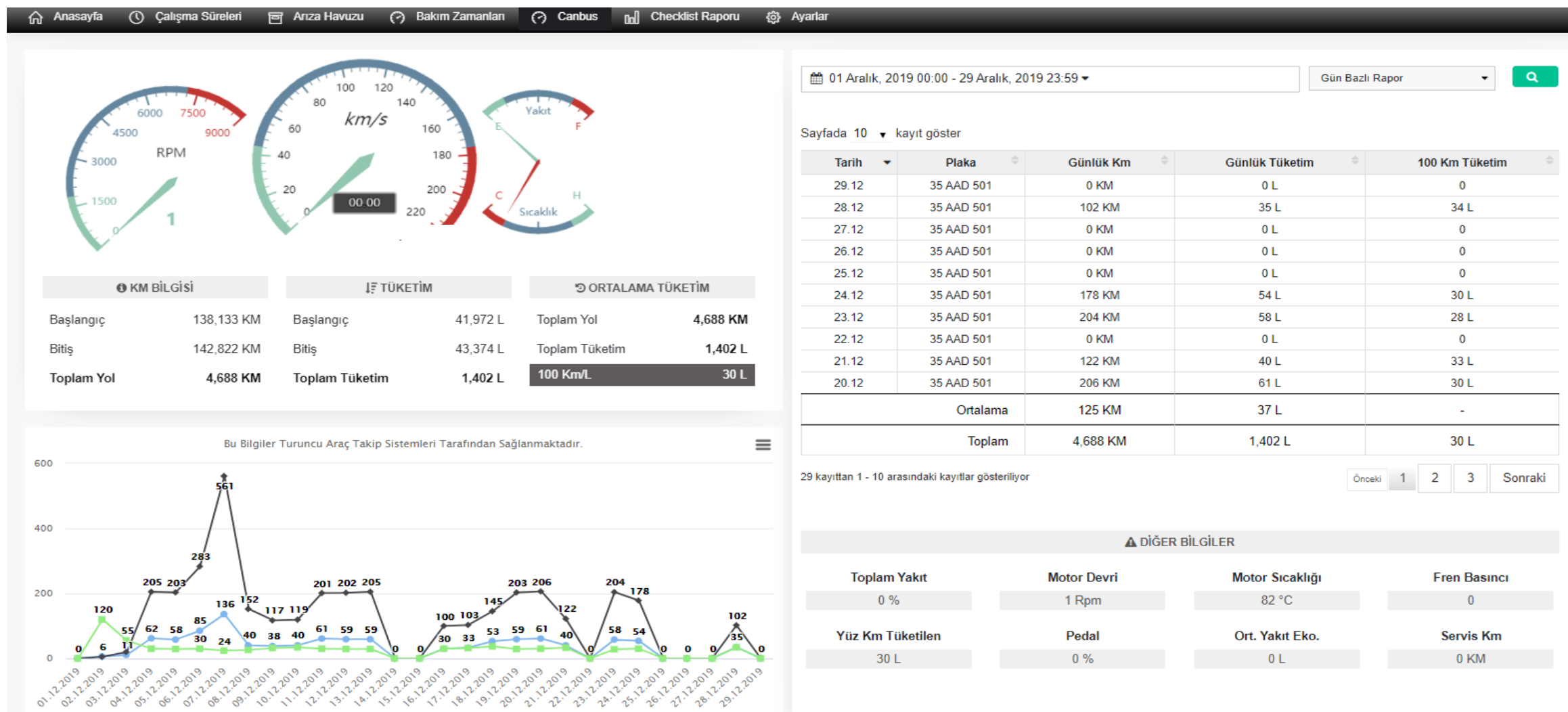
Önceki

1

Sonraki

# Engine Parameters & Fuel Consumption

Fuel consumption of equipments , working times, total fuel consumption, fuel consumption per 100km, engine temperature, maintenance time etc. instantly access all parameter information, report historically.



## Settings (Advanced)

## Your Custom Settings Screen

## All Settings Users can make their own definitions.

- Supplies
- Malfunction Status
- Type of Malfunction
- Worksite

- Sapre Part Status
- Define Checklist
- Priority
- Send Announcement



Anasayfa

Çalışma Süreleri

Anıza Havuzu

Bakım Zamanları

Canbus

Checklist Raporu

Ayarlar

+

Makina Ekle

İşlemler	Uuid	Dimsay Kodu	Makina Tanımı
<input type="checkbox"/>	<input type="text" value="Bul"/>	<input type="text" value="Bul"/>	<input type="text" value="Bul"/>
<input type="checkbox"/> <a href="#">Düzenle</a> <a href="#">İşlemler</a> <a href="#">QR Kodu Göster</a>		1007	jintoraco
<input type="checkbox"/> <a href="#">Düzenle</a> <a href="#">İşlemler</a> <a href="#">QR Kodu Göster</a>		1007	j
<input type="checkbox"/> <a href="#">Düzenle</a> <a href="#">İşlemler</a> <a href="#">QR Kodu Göster</a>		1005	argan
<input type="checkbox"/> <a href="#">Düzenle</a> <a href="#">İşlemler</a> <a href="#">QR Kodu Göster</a>			st
<input type="checkbox"/> <a href="#">Düzenle</a> <a href="#">İşlemler</a> <a href="#">QR Kodu Göster</a>		1003	1003 Caterpillar
<input type="checkbox"/> <a href="#">Düzenle</a> <a href="#">İşlemler</a> <a href="#">QR Kodu Göster</a>		1002	cıntorado turun
<input type="checkbox"/> <a href="#">Düzenle</a> <a href="#">İşlemler</a> <a href="#">QR Kodu Göster</a>		1001	cındorga cındorga

Sarf Malzeme

Arıza Durum

Arıza Türü

Şantiye

Yedek Parça

Yedek Parça Durum

Checklist Tanımla

Öncelik Durum

Duyuru Gönder

Anasayfa > Makina Tanımla

Araçlar

Dışarı Aktar

Yazdır

Filtrele

	Üretici Firma	Model	Üretim Yılı	Motor Seri No
<input type="text" value="Bul"/>	<input type="text" value="Bul"/>	<input type="text" value="Bul"/>	<input type="text" value="Seçiminiz"/>	<input type="text" value="Bul"/>
	mercedes	2009	2009	1231298
	Volvo	2009	2008	123152351
	Volvo	2009	2009	020020201001
	10001	2018	1982	1004
	mercedes	venus	2012	1003
	Volvo	2010	2010	1002
	renault	2018	2018	01

Sayfa başına 10 kayıt göster

Toplam 7 kayıttan 1 ile 7 arası gösteriliyor

1



“

# **Mobile Application Screens**

”

# Mobile Application Screens

Using mobile application; machine operators, field technical teams and warehouse units provide fuel and parts support log in different screens and instantly transmit fault and maintenance information to the centers.

Arıza Bildiri...

Resim Ekle

Lütfen Arızanın Resmini Çekiniz

Bauger  
Bauger 2009

Makinada oluşan arızaya teknik ekiplerin müdahale edebilmesi için bu alanı kontrol etmeniz gerekmektedir

Arıza Türü Seçiniz

Mekanik Arıza

Arızanın Önceliğini Giriniz

Bir öncelik seçiniz

Araç Hakkında Not Ekleyebilirsiniz

Arıza hakkında bilgi veriniz.

ARIZA BİLDİR

Ana Sayfa

Sn. ergün ergünoglu  
Araç Sürüş öncesi QRKOD Okutun. Cheklisti doldurun

ARIZA BİLDİR

Qr Code Tara

QRKOD Tanımlı Değil !

QRKOD Tanımlanmadan Göreve Başlamayın

Sürüşe Başlamadan Önce Aracınızı Kontrol Edin

Cheklist Onaylanmadı !

Cheklist Kontrol ediniz. Eksik olan parça ve işlemleri belirtin

Turkcell Wi-Fi 15:58 %41

Cheklist Ekr...

Marka Bauger

Model 2009

Dimsay Kodu 1007

Aşağıdaki listeyi aracınızı kullanmadan kontrol edin. Eksik olan araç donanımlarını lütfen belirtin

ARAÇ CHEKLİST

yag seviyesi uygun mu

☐ Evet

☐ Hayır

silicekler çalışıyor mu

☐ Evet

☐ Hayır

cam kırık mı

Sincerely

## Envepo Yazılım Ticaret A.Ş.

Barbaros, Varyap Meridian A Blok, I Blok Kat.:5 Daire: 70  
Ataşehir - İSTANBUL  
T.: 0 (216) 594 75 00